

Acoustical Walls

PET DESIGNER WALL PANELS

PET Designer Wall Panels offer a wall covering solution that is not only sound absorbing, but adds texture and character to spaces that may seem open and bare.

Acoustical Walls

PET DESIGNER WALL PANELS

Applications: Walls

Physical Properties:

Material: 9mm, 1/2"

Indoor Environment: Acceptable for High Humidity applications

Fire Rating: Class A (ASTM E84) | Class A (UL 723)

Weight: 1680 GSM (9mm) | 2441 GSM (1/2")

Sustainability and Certifications:

- Low VOC
- 100% Recyclable
- 55-60% Post Consumer Recycled Content
- Declare(1/2" PET)
- LEED Declarations Page
- CHPS(1/2" PET)

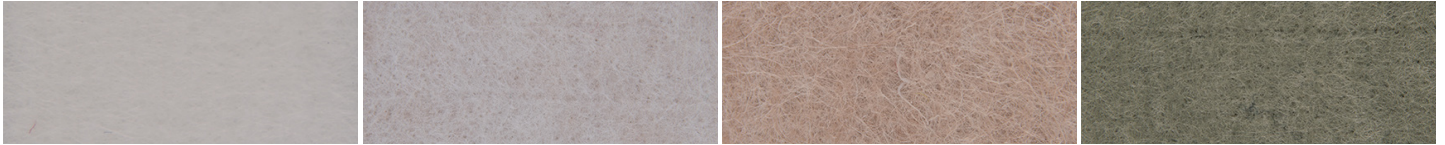
Acoustical Performance

| Mounting Method (ASTM C423 / ASTM E795) | 9mm | | | 1/2" | | |
|--|------|------|-----------|------|------|-----------|
| | NRC | SAA | Sabin/S.F | NRC | SAA | Sabin/S.F |
| A | 0.35 | 0.35 | .35-.39 | 0.45 | 0.45 | .46-.53 |
| F25 | .55* | .55* | .56-.61* | 0.65 | 0.66 | .66-.76 |
| J(Array) | 0.45 | .47* | .91-.95* | 0.55 | 0.57 | 1.1-1.2 |

*The specific mounting method used during testing can significantly affect the sound absorption data and the resulting Noise Reduction Coefficient (NRC) or Sound Absorption Average (SAA) ratings. Therefore, it is crucial to compare product performance data only when the same test method and mounting type are used, and the mounting type should be as close as possible to the real-world installation method.

Colorways

9mm

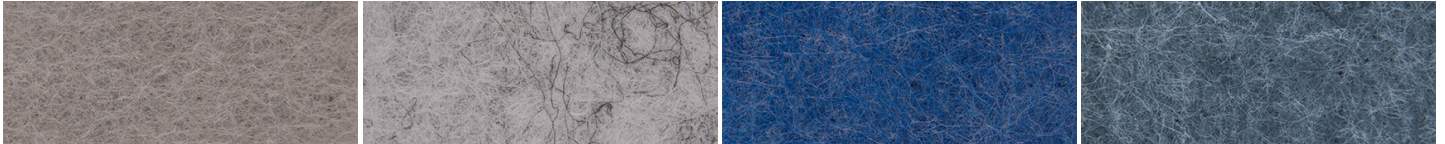


Moonstone 4201

Warm Shell 4265

Desert Bloom 4205

Almond Leaf 4264

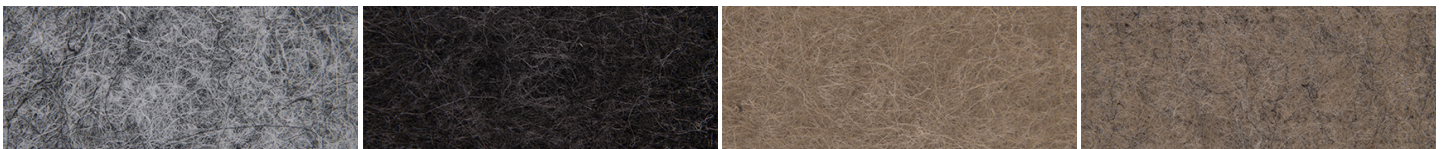


Glacier Mist 4213

Arctic Dawn 4214

Bluebell Sky 4236

Tundra Stone 4218

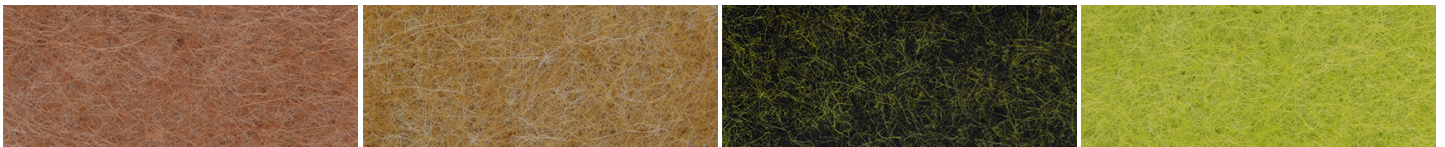


Storm Cloud 4215

Charcoal Current 4219

Desert Trail 4204

Timber Bark 4258

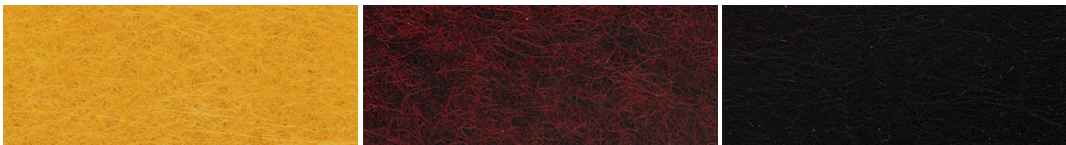


Terra Clay 4207

Desert Bluff 4242

Mosswood 4254

Sunlit Moss 4251

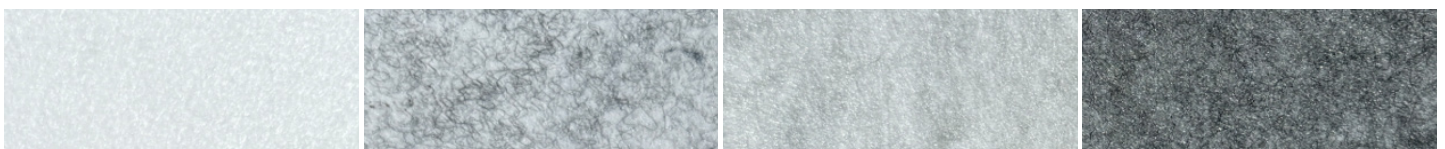


Prairie Sun 4241

Vineyard Earth 4248

Midnight Timber 4224

1/2"



8807

8804

8819

8803



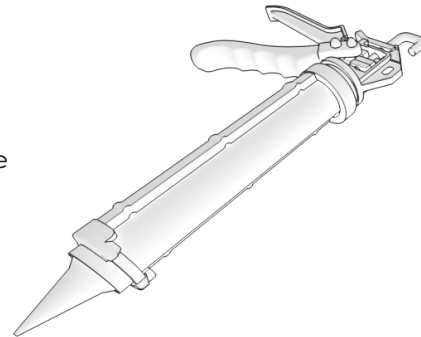
8802

8801

8805

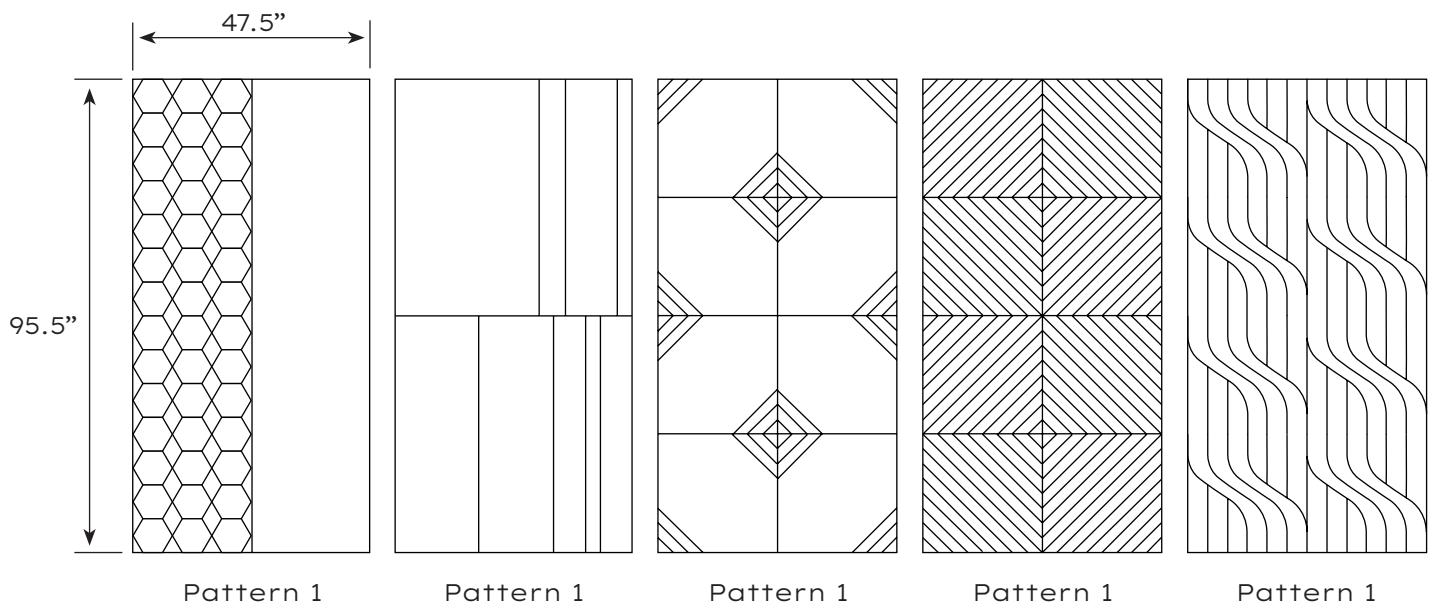
Attachment Methods / Hardware

Designer wall panels should be installed with construction grade adhesive suitable for application.



Available Sizes and Patterns

* Sizes shown below are nominal.



How To Specify

1. Pattern

- Select pattern

2. Color

- Select a color

3. Mounting Method

- Select mounting method